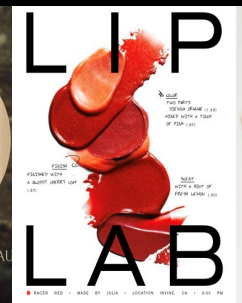
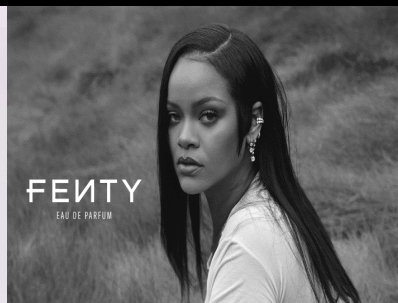


KENDO

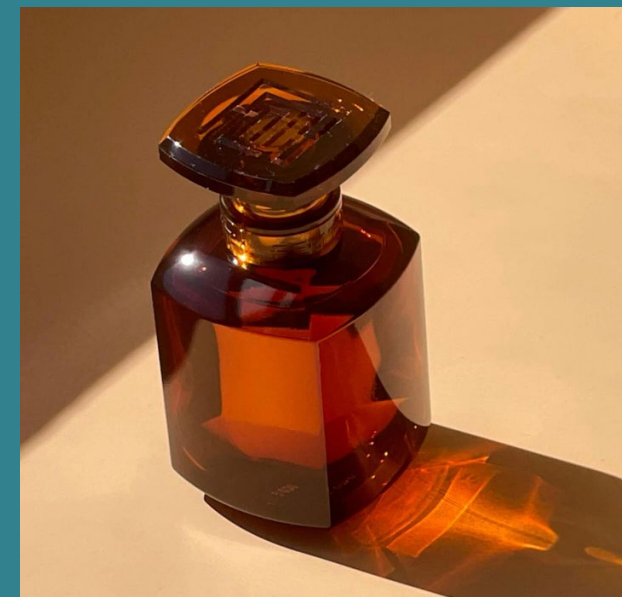
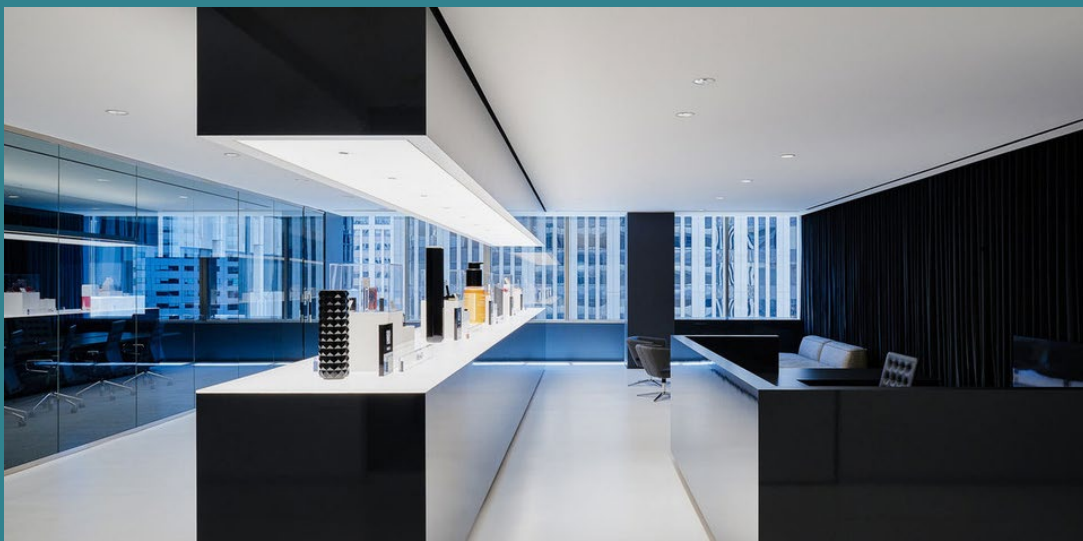
Creighton Pang: Director of Business Systems
Eric Bjerstedt: Director of Packaging

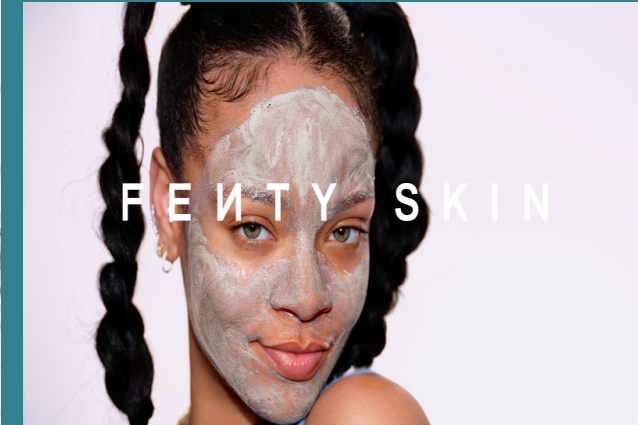
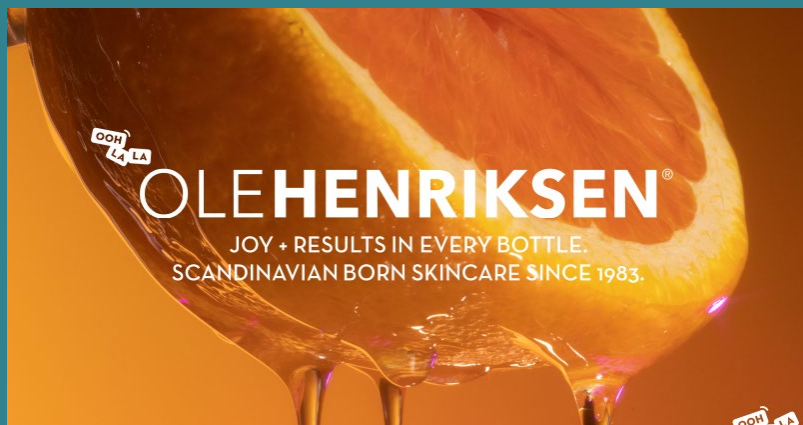
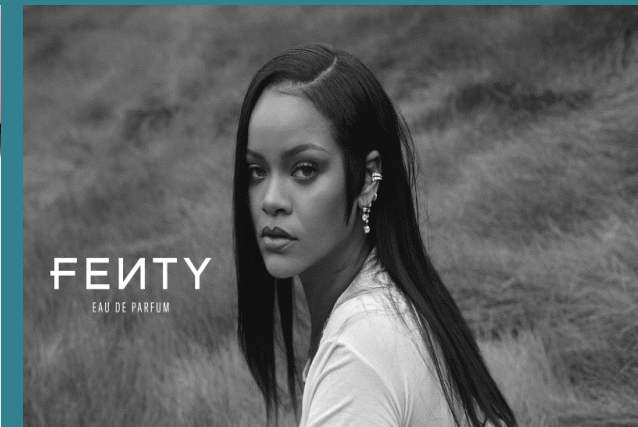
Kendo's Devex Journey // September 27, 2023





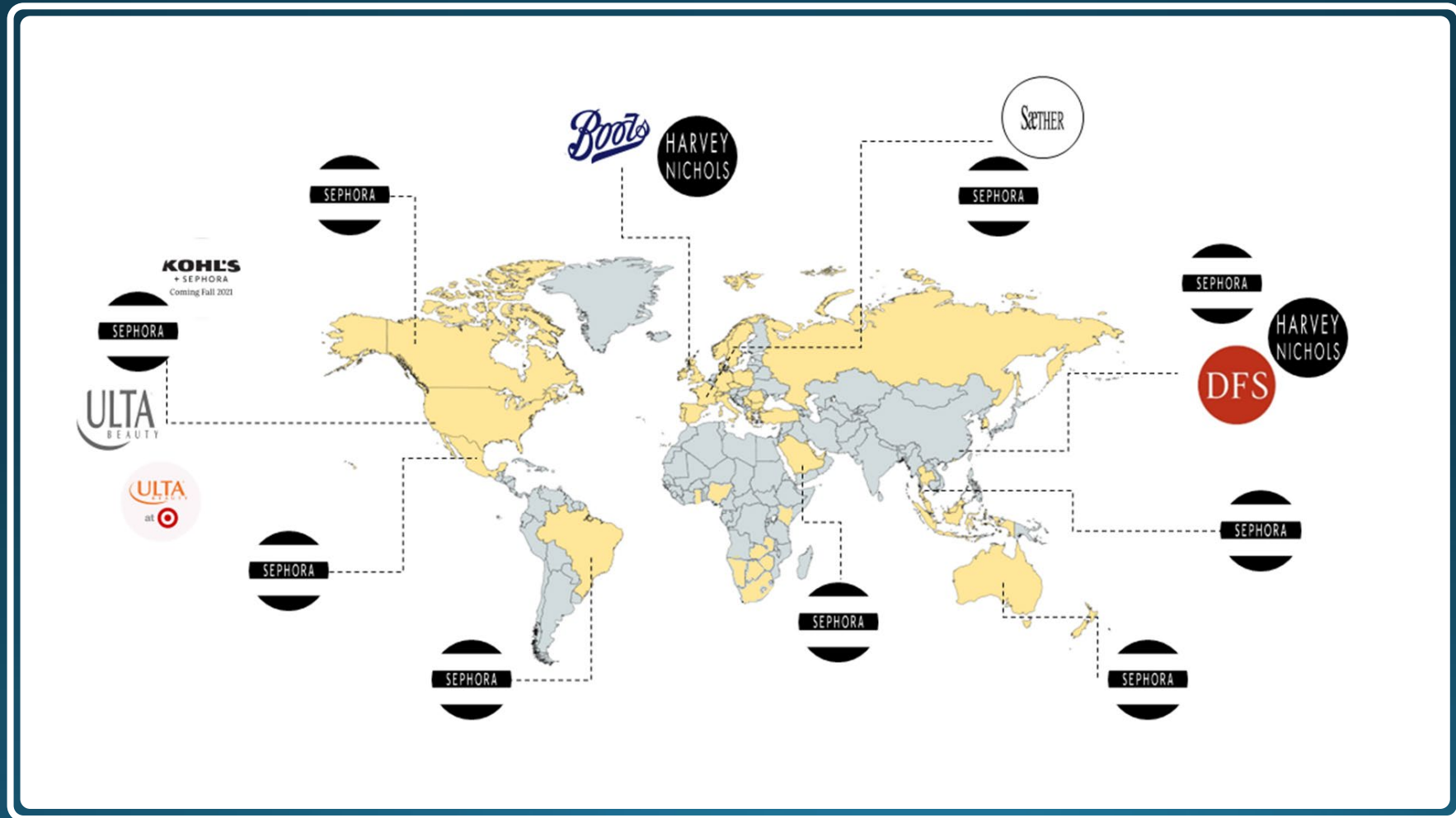
2008-Present





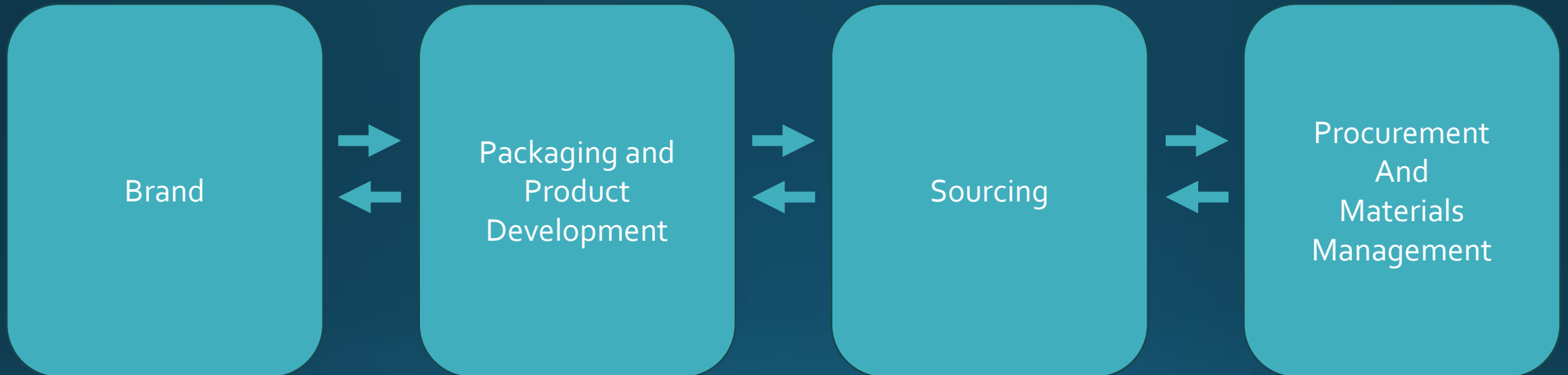
KENDO IS A BEAUTY INCUBATOR WITH SIX UNIQUE BRANDS

Where to find Kendo Products:



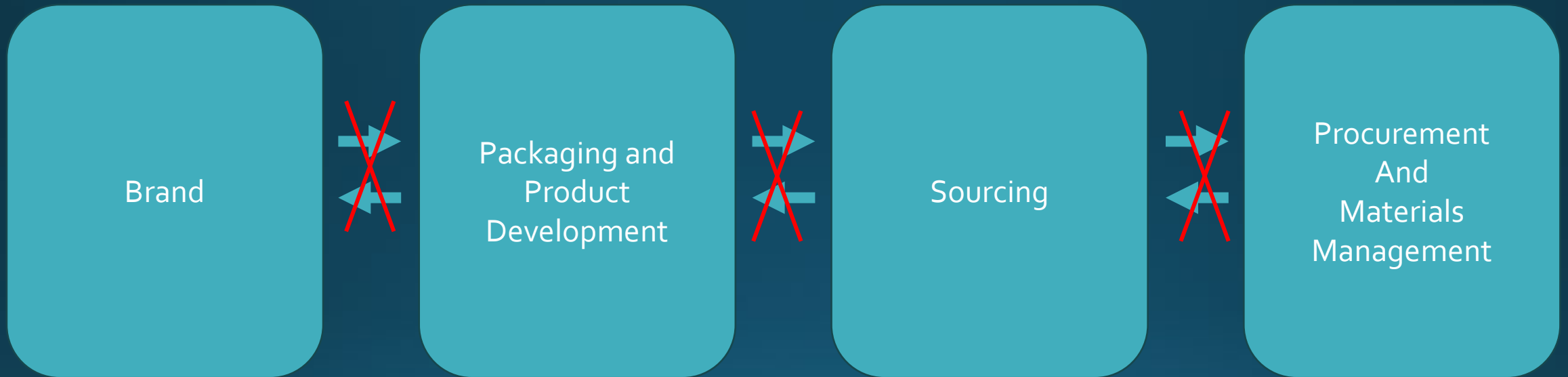
THE CHALLENGE:

As Kendo has grown, communication has become more complex



THE CHALLENGE:

As Kendo has grown, communication has become more complex



- Manual process
- Difficulty updating
- Limited controls

Why do we need a PLM/Devex?

Drive Effective
communication
across Kendo

Store
Documents and
Specifications

Effective
Document
Control

Drive Effective Communication:



- Overall scope of project
- Product Requirements
- Volumes and Target Costs
- Communicate to all Teams

- Assign Part Numbers
- Create BOMs and Supporting Specs
- Lock Projects on Completion

- Work seamlessly with existing technologies
 - Order management systems
 - Vendor management systems

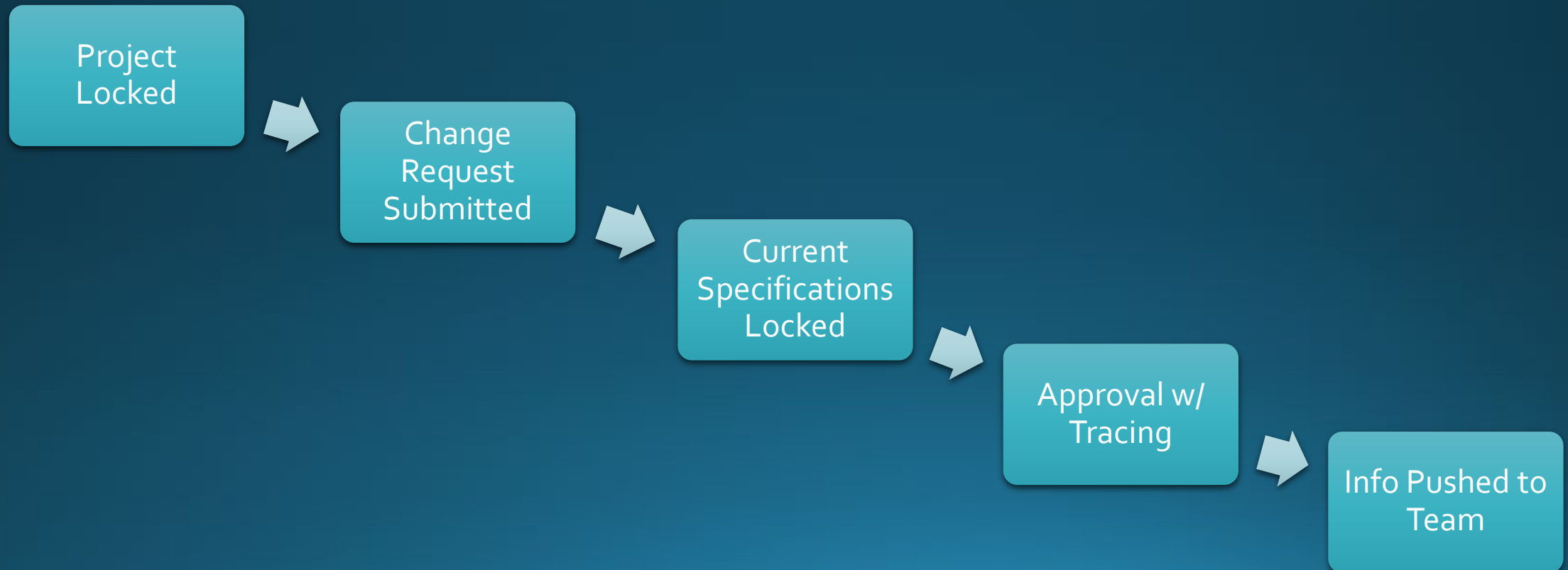
Critical Documentation Storage:

- Single Location for All Relevant Data:
 - Project Briefs
 - Final BOMs
 - SKU Details
 - Product and Packaging Specifications
- All Teams Accessing Same Information

The screenshot displays the 'PROJECT SEARCH' application interface. At the top, there are tabs for 'Basic', 'Subproject', 'Custom Queries', and 'Advanced', with 'Custom Queries' selected. Below the tabs, there are buttons for 'New Query' and 'Filter', and a 'Choose recent query:' dropdown menu. The main content area shows a table with columns for 'Title' and 'Description'. The first row is 'Custom Search' with the description 'Custom Search - simplify version'. Below the table, there are several filters and actions: 'Master Data' (PROJ_OLD_CLASSIFICAT), 'Project Search', 'Quick Automation Projects', 'Search By Collection - And:', 'Test Kits', and a 'Show 20 per page' option. On the right side, there is a 'Manage Panels' sidebar with a list of panels: 'General', 'Project Brief', 'Master Data', 'Project Team', 'Product Codes', 'Shade Generation', 'Item Coverage', 'Trade Agreement', 'Documents', 'Project References', 'Specifications', and 'New Items'. The 'Product Codes' panel is currently selected and highlighted in blue. To the right of the sidebar, the 'General' panel is visible, showing a list of items: 'Project Brief', 'Master Data', 'Project Team', 'Product Codes', 'Shade Generation', 'Item Coverage', 'Trade Agreement', 'Documents', 'Project References', 'Specifications', and 'New Items'.

Effective Document Control:

- Project Locked on Completion
- Change Required? Formal Change Process must be followed



Why Did We Choose Devex?

~~Why Did We Choose Devex?~~

Why Did We Choose Devex?

- Initially implemented Different PLM program
- Multiple issues including:
 - Confusing interface
 - Limited Functionality
 - Most importantly – Could not speak to other existing systems

Why Did We Choose Devex?

- After scrapping – Explored new options
- Chose Devex due to:
 - Proven Implementation at Other Organizations
 - Ability to use 'Out of Box' and add customization
 - Compatibility with Existing Kendo Systems

Why Did We Choose Devex?

- After scrapping – Explored new options
- Chose Devex due to:
 - Proven Implementation at Other Organizations
 - Ability to use 'Out of Box' and add customization
 - Compatibility with Existing Kendo Systems
 - JJ told us to....



Rollout Journey so far:

Piloting
Two Brands

50 Active
Users

150
Projects



Current Development Process:

Learnings:

Need flexibility
to allow for
modifications

Need ability to
efficiently &
frequently
update ERP

Too much time
spent on
unnecessary
task

Future: Efficiency

Remove
unnecessary
fields

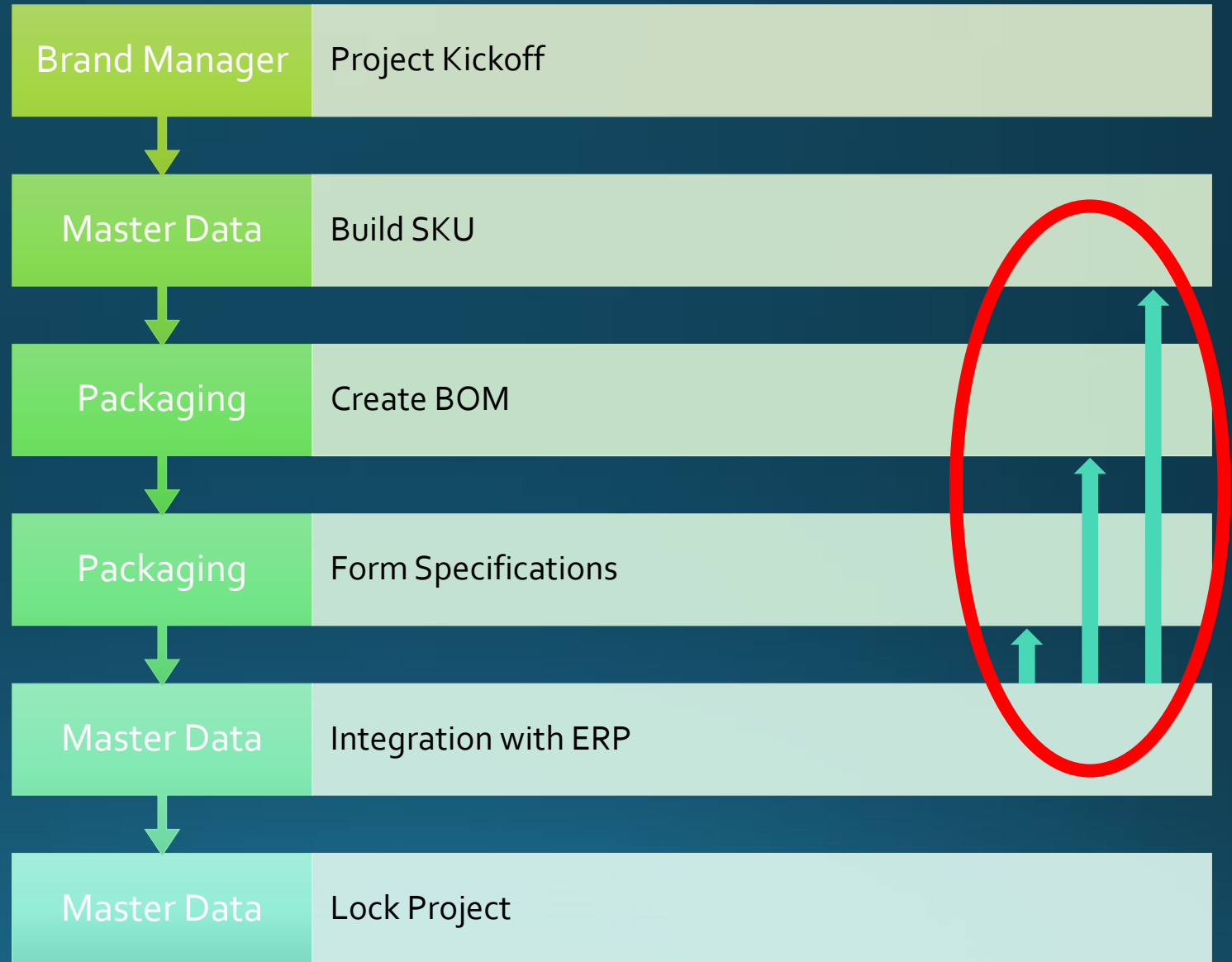
Add more
flexibility for
BOM
modifications

Apply Shade
Generation
feature as
needed

Shore up
change
management

Add manual
project

Future Development Process:



Future Plan:

Immediate

- Implement Needed Revisions

Short Term

- Launch Remaining Brands

Long Term

- Broaden Functionality

Questions?

Thank you!