



What's New

2023 highlights & coming soon

Trace One 2022, All rights reserved.

Trace One and Eqos are trademarks of Trace One. All other company and product names may be trademarks of their respective owners and are used for product and company identification only. No part of this document may be reproduced, distributed or transmitted in any form or by any means, including photocopying and recording, without the express written permission of Trace One. Trace One has made reasonable effort to keep the information in this document current and accurate as of the date of publication or revision. However, Trace One does not guarantee or imply that this document is error free or accurate with regard to any particular specification. Trace One does not assume any liability resulting from the use of the information in this document.

Where remarkable products begin

Full coverage for a truly remarkable edge

Act

DATA GOVERNANCE

Make data -driven decisions with centralized and synchronized data in PLM system and powerful data analytics, reporting, flexible dashboards and real -time performance metrics.

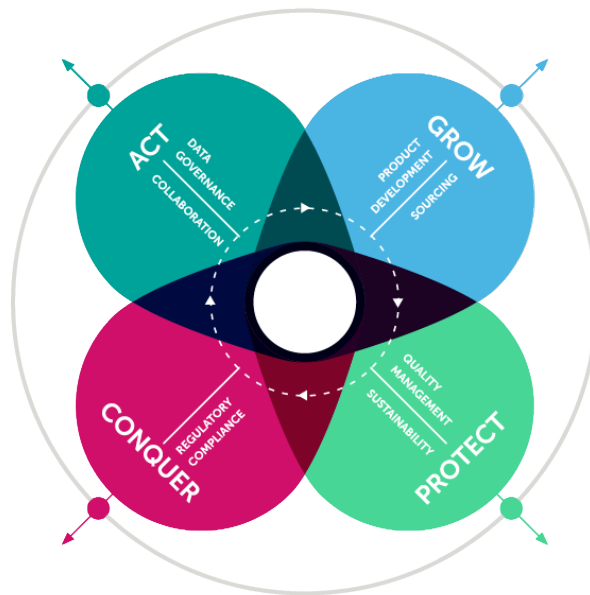
COLLABORATION

Manage and measure every aspect of the product lifecycle with streamlined collaboration across departments and the whole supply chain.

Conquer

REGULATORY COMPLIANCE

Expand to new markets using a global regulatory database for fast go/no -go assessments and reduce recall risk with integrated compliance checks at every stage of product development.



Grow

PRODUCT DEVELOPMENT

Accelerate time -to-market and increase operational productivity with a holistic 360 view of all aspects of the product development process.

SOURCING

Find new products and suppliers easily and improve the efficiency of your tendering process to launch products faster at the right price and quality.

Protect


SUSTAINABILITY

Connect your corporate social responsibility goals with day -to-day operations embedding sustainability into your product strategy.

QUALITY

Drive continuous improvement of your products and build a resilient supply chain to quickly respond to market trends and disruptions.

Our extensive product suite to cover all your needs

	 PRODUCT LIFECYCLE MANAGEMENT End-to-end PLM platform to speed up the product development process from ideation to market launch.	 REGULATORY COMPLIANCE Regulatory database, product compliance assessment and EHS compliance solution.	 ANALYTICS Analytics platform that combines data across the product lifecycle from multiple sources.	 SUSTAINABILITY Quickly identify opportunities to improve sustainability of products and their components.	 SOURCING Online solution for buyers to quickly source innovative products and find reliable suppliers.
SOLUTIONS FOR MANUFACTURERS	DEVEX PLM <i>F&B, cosmetics, chemicals</i>	DEVEX PLM <i>F&B, cosmetics, chemicals</i> COMPLIANCE CLOUD <i>F&B, cosmetics</i> HAZEX <i>Cosmetics, chemicals</i>	INSIGHT <i>F&B, cosmetics, chemicals</i>	ECODEX <i>F&B, cosmetics</i>	MARKETPLACE <i>F&B, cosmetics, chemicals</i>
SOLUTIONS FOR RETAILERS	RETAIL PLM <i>F&B, cosmetics, chemicals</i>	RETAIL PLM <i>F&B, cosmetics, chemicals</i>	INSIGHT <i>F&B, cosmetics, chemicals</i>	RETAIL PLM <i>F&B, cosmetics, chemicals</i>	RFX MARKETPLACE <i>F&B, cosmetics, chemicals</i>
VALUE	GROW Accelerate time-to-market and increase operational productivity with a 360° view of all aspects of the product development process.	CONQUER Expand into new markets using quick go/no-go assessments. Reduce recall risk with at every stage of product development.	ACT Make data-driven decisions with centralized and synchronized data in your PLM system.	PROTECT Connect your corporate social responsibility goals with day-to-day operations.	GROW Find new products and suppliers to improve the efficiency of your tendering process. Launch high-quality products faster at the right price.

End-to-end visibility for all PLM and compliance needs

Continuous improvement and innovation by dedicated software specialists leveraging industry knowledge, regulatory expertise and market feedback

- ❑ 3 main verticals: F&B, Cosmetic & Chemicals
- ❑ 23 regulatory experts
- ❑ 20+ user groups & customer workshops
- ❑ Global customer enhancement request collection process
- ❑ 18,000+ man-days of development



With better user experience comes better productivity

Dedicated team of UI/UX experts improving our user interface & simplifying the user experience for more productivity

❑ Product development

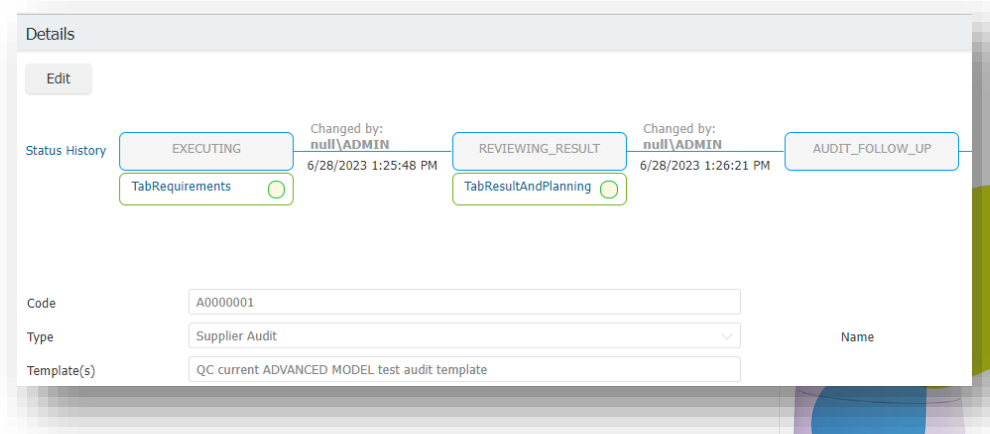
- In line search & improved formula comparison in multiple- formula editor

❑ Quality Management

- Audit navigator: status management interactive chart

❑ Artwork Management

- Flexible & actionable Gantt view



Effortless compliance to conquer new markets

Continuous regulatory updates to the best -in-class software with embedded Regulatory database.

❑ Devex

- Advanced global limit calculation
- Cosmetic labeling & PIF enhancements
- Cosmetic EU regulation data
- Food labeling (CANADA, MEXICO FOP)

❑ Compliance cloud

Regulatory monitoring expansion

- Pet food, Food supplements, Personal care
- Market: US, EU, Canada, UK, France, FSANZ

❑ Hazex

- New EU fragrance allergens analysis
- New GHS/SDS module for Great Britain
- New EHS national European OEL data package
- New Danish MAL code calculation for mixtures
- Update to existing GHS/SDS modules and transport regulations



We give power to the users

Enabling self configuration to empower users to get the most out of our solutions

□ Devex PLM

- Report configurator
- User forms editor

□ Compliance cloud

- My queries user-defined settings
- Search results user personalization

The screenshot displays the Compliance Cloud interface. At the top, there's a navigation bar with 'Home Page' and 'FNMS - Food News'. Below it, a breadcrumb trail shows 'Food Law News', 'Food Safety', 'Alerts & Food Recalls', and 'Law News'. A search bar and 'Filter & Refine' button are visible. The main content area is titled 'Creation of a New Query' and is in Step 1 of a 3-step process. The 'DEFINE QUERY PARAMETERS' section includes fields for Region (Europe, Middle East), Keyword (Spiced, Lanchester Meat), Country, Site, Type, and Category. The background shows a search results page with a list of records, including 'HE 111/20: actions for', 'Crown Prit Detectable', and 'Alert 3912 in expirati'.

Outperform ESG packaging objectives

We focused on packaging management to better monitor ESG objectives & plastic reduction, resulting in improved visibility, data accuracy and delivery against brand objectives

- ❑ Dedicated packaging item lifecycle
- ❑ Better collection of data (materials, suppliers, percentage recycled)
- ❑ New set of validation rules



THE UK
PLASTICS
PACT



Pacte
National
Emballages
Plastiques



New products & services coming soon to propel your brand's growth in ever-changing markets

New offers coming soon

- Increased industry knowledge (verticals & regulatory data)
- New product capabilities

Globally extended services

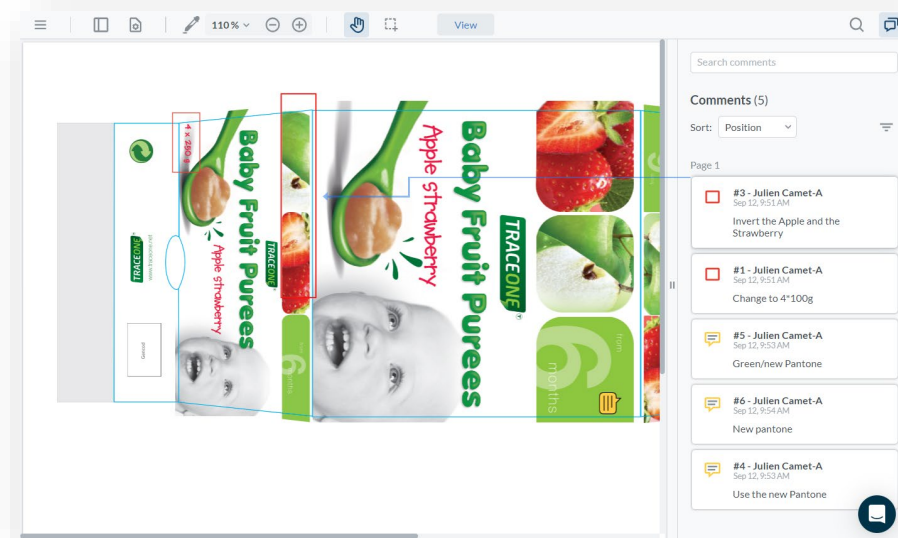
- Customer Success
- Account Management
- Supplier Management
- Global support



Never miss a product launch with artwork management

Leverage the new version of our packaging artwork management module

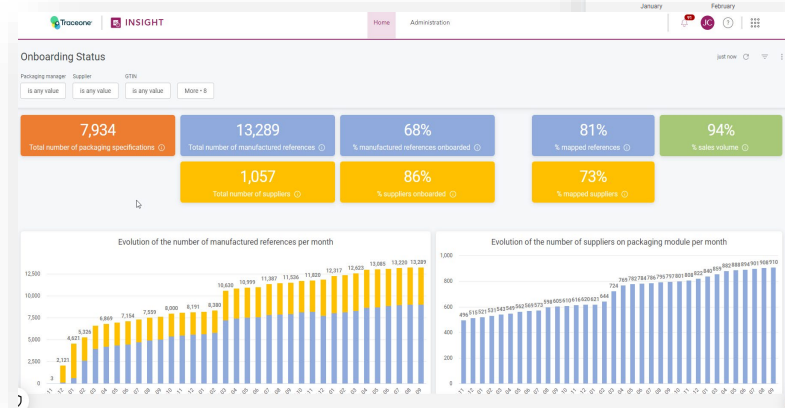
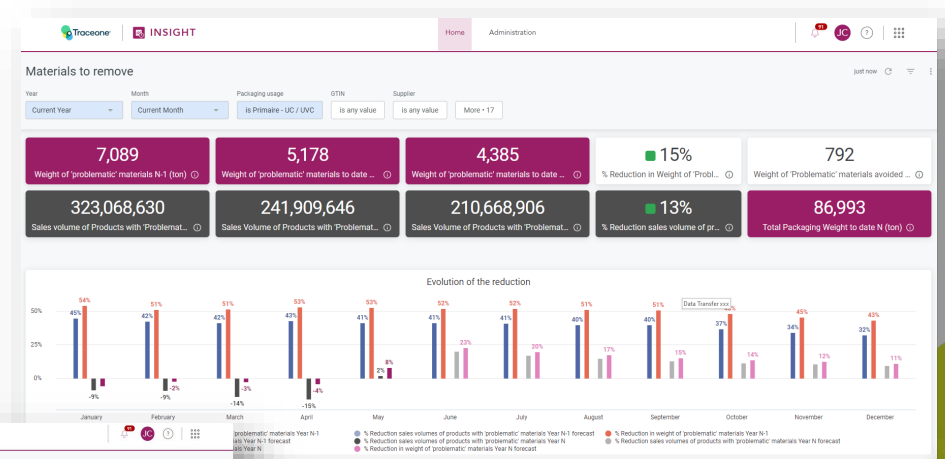
- ❑ Collaborative management of packaging projects
- ❑ Annotate and compare artwork and decrease review loops
- ❑ Keep track of assets & final validated artwork



Drive your business with real-time data & dynamic dashboards

Our team of data experts is offering ready to use, value-oriented & predictive dashboards.

Custom services to integrate external sources of data to produce actionable and tailored decision-making dashboards



Supplier engagement makes it easier

We're experts in collaborative solutions and over the years, we've become very good at:

- ❑ Onboarding suppliers
- ❑ Training users
- ❑ Ensuring adoption

We are extending that expertise to all clients worldwide



ONBOARDING
A **dedicated** and **experienced team** to **onboard suppliers** and accompany them in the registration process. Supplier don't gain access to PLM without onboard involvement.



TRAINING
Online Knowledge base with documentation and recorded webinars to **ensure suppliers** know what's expected and how to use the solutions in the most **efficient** way.



COACHING
Additional personalized training **options** such as one to one sessions and specification completion services are offered to suppliers willing to **take the extra step**



SUPPORT
Team of solution experts to manage all user outreach regarding usage of the solution (assuming training has been attended) and to **rapidly resolve** functional & technical issues

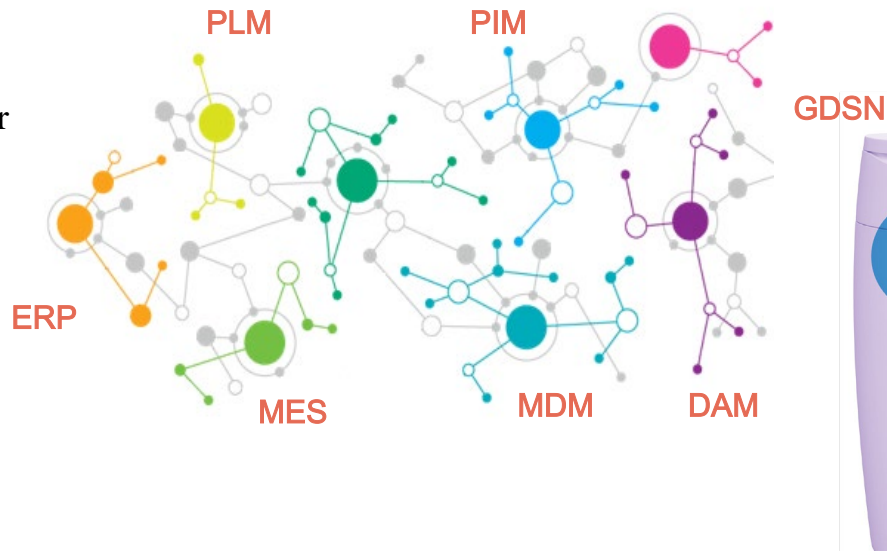
Enhanced connectivity to reduce manual data transfer

We're playing in a crowded software ecosystem where digitalization and connectivity is key.

We'll keep strengthening our alignment with market standards and out-of-the box connectivity.

We need your feedback:

- Devex to Retail PLM standard connector
- ERP standard connectors
- PIM standard connectors





WE VALUE YOUR FEEDBACK

